

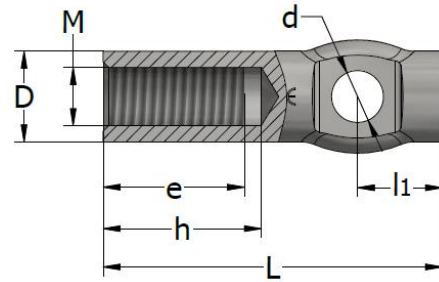
COMMERCIAL DOCUMENTATION



FIXING INSERTS | HBU **FIXING INSERT WITH CROSS-DRILLED HOLE**



FIXING INSERT WITH CROSS-DRILLED HOLE – HBU



Fixing inserts HBU are manufactured from steel bar 11SMnPb30 (W 1.0718) galvanised (EV) or from stainless steel bar A2 – 304 / 1.4305 (SS2) or A4-316Ti / 1.4571 (SS4). **Do not use these inserts for lifting.**

HBU-EV	Product no.	Thread	Overall length	D	d	l	e	h	Admissible load
		M	[mm]	[mm]	[mm]	[mm]	[mm]	[mm]	[kN]
HBU M10x50-EV	45504	10	50	14	6.2	13	20	25	3.5
HBU M10x60-EV	45399	10	60	14	6.2	13	20	25	4.0
HBU M12x60-EV	45505	12	60	16	9.2	15	24	28	6.0
HBU M12x70-EV	45400	12	70	16	9.2	15	24	28	7.0
HBU M16x80-EV	45506	16	80	22	10.2	16	30	35	8.0
HBU M16x85-EV	45507	16	85	22	10.2	16	30	35	9.0
HBU M16x100-EV	45401	16	100	22	10.2	16	30	35	13.0
HBU M20x100-EV	45508	20	100	26	12.2	24	35	40	14.0
HBU M20x130-EV	45402	20	130	26	12.2	24	35	40	18.0
HBU M24x120-EV	45509	24	120	32	15.2	32	40	45	18.0
HBU M24x150-EV	45403	24	150	32	15.2	32	40	45	23.0

HBU-SS2 (1.4305)	Product no.	Thread	Overall length	D	d	l	e	h	Admissible load
		M	[mm]	[mm]	[mm]	[mm]	[mm]	[mm]	[kN]
HBU M10x50-SS2	45363	10	50	14	6.2	13	20	25	3.5
HBU M10x60-SS2	45516	10	60	14	6.2	13	20	25	4.0
HBU M12x60-SS2	45365	12	60	16	9.2	15	24	28	6.0
HBU M12x70-SS2	45517	12	70	16	9.2	15	24	28	7.0
HBU M16x80-SS2	45367	16	80	22	10.2	16	30	35	8.0
HBU M16x85-SS2	45518	16	85	22	10.2	16	30	35	9.0
HBU M16x100-SS2	45519	16	100	22	10.2	16	30	35	13.0
HBU M20x100-SS2	45369	20	100	26	12.2	24	35	40	14.0
HBU M20x130-SS2	45520	20	130	26	12.2	24	35	40	18.0
HBU M24x120-SS2	45371	24	120	32	15.2	32	40	45	18.0
HBU M24x150-SS2	45521	24	150	32	15.2	32	40	45	23.0

HBU-SS4 (1.4571)	Product no.	Thread	Overall length	D	d	l	e	h	Admissible load
		M	[mm]	[mm]	[mm]	[mm]	[mm]	[mm]	[kN]
HBU M10x50-SS4	45364	10	50	14	6.2	13	20	25	3.5
HBU M10x60-SS4	45510	10	60	14	6,2	13	20	25	4.0
HBU M12x60-SS4	45366	12	60	16	9.2	15	24	28	6.0
HBU M12x70-SS4	45511	12	70	16	9,2	15	24	28	7.0
HBU M16x80-SS4	45368	16	80	22	10.2	16	30	35	8.0
HBU M16x85-SS4	45512	16	85	22	10,2	16	30	35	9.0
HBU M16x100-SS4	45513	16	100	22	10,2	16	30	35	13.0
HBU M20x100-SS4	45370	20	100	26	12.2	24	35	40	14.0
HBU M20x130-SS4	45514	20	130	26	12,2	24	35	40	18.0
HBU M24x120-SS4	45372	24	120	32	15.2	32	40	45	18.0
HBU M24x150-SS4	45515	24	150	32	15,2	32	40	45	23.0

CONTACT



TERWA is the global supplier for precast and construction solutions with multiple offices around the world. With all our staff, partners and agents, we are happy to provide all construction and precast companies who work in the building industry with full service and 100% support.

TERWA CONSTRUCTION GROUP

Terwa Construction Netherlands (HQ)

Global Sales & Distribution
Kamerlingh Onneslaan 1-3
3401 MZ IJsselstein
The Netherlands
T +31-(0)30 699 13 29
F +31-(0)30 220 10 77
E info@terwa.com

Terwa Construction Central East Europe

Sales & Distribution
Strada Sânzieni
507075 Ghimbav
Romania
T +40 372 611 576
E info@terwa.com

Terwa Construction Poland

Sales & Distribution
Ul. Cicha 5 lok. 4
00-353 Warszawa
Poland
E info@terwa.com

Terwa Construction India & Middle East

Sales & Distribution
India
T +91 89 687 000 41
E info@terwa.com

Terwa Construction China

Sales & distribution
5F 504, No. 101 Chuanchang road
PRC, 200032, Shanghai
China
E info@terwa.com

ALL SPECIFICATIONS CAN BE CHANGED WITHOUT PREVIOUS NOTICE.

DISCLAIMER

Terwa B.V. is not liable for deviations due to wear of the products it has delivered. Neither is Terwa B.V. liable for damage due to inaccurate and/or improper handling and use of the products it has delivered and/or use of same for purposes other than those intended.

Terwa B.V.'s responsibility is furthermore limited in accordance with article 13 of the "Metaalunie" conditions, which are applicable for all Terwa B.V. deliveries. The user is responsible for ensuring compliance with all applicable copyright laws. Without limiting the rights under copyright, no part of this documentation may be reproduced, stored in or introduced into a retrieval system, or transmitted in any form or by any means (electronic, mechanical, photocopying, recording, or otherwise), or for any purpose, without the express written permission of Terwa B.V.